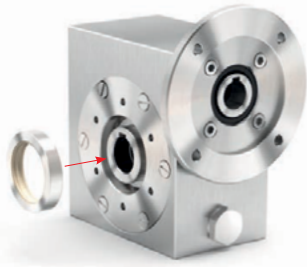


# STAINLESS STEEL GEARBOXES



**Twin viton seals with stainless steel shield  
IP69K certified**

*Anelli di tenuta in viton con schermo protettivo in acciaio inox;  
Certificazione IP69K*



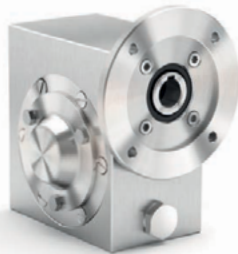
**Mounting holes on both side  
of the housing for universal mounting**

*Fori di montaggio in entrambi i lati della cassa*



**Output shaft in AISI 316L and special cover  
for full seals protection**

*Mozzo e albero in uscita in AISI 316L e coperchietto protettivo  
per anelli paraolio*



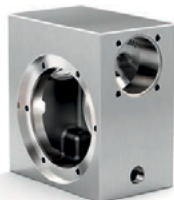
**New cover with O-ring**

*Nuovo coperchietto protettivo per anelli paraolio chiuso con  
o-ring*



**Removable hollow shaft with key for safe  
torque transmissions**

*Albero cavo removibile con chiavetta mozzo/corona*



**High tech housing finishing**

*Finitura speciale sulla cassa*

# I30 Stainless Steel - Gear 21Nm

## Rating - Stainlesssteel WORM GEARBOXES



■ QUICK SELECTION / Selezione veloce							input speed (n <sub>1</sub> ) = 1400 min <sup>-1</sup>						
Output Speed n <sub>2</sub> [min <sup>-1</sup> ]	Ratio i	Motor power P <sub>1M</sub> [kW]	Output torque M <sub>2M</sub> [Nm]	Service factor f.s.	Nominal power P <sub>1R</sub> [kW]	Nominal torque M <sub>2R</sub> [Nm]	B5 motor flanges not available		Available B14 motor flanges		Dynamic efficiency RD	Tooth Module [mm]	Ratios code
							-	-	-O	-P			
280	5	0.18	5	3.3	0.60	17	-	-	56	63	82	1.26	01
200	7	0.18	7	2.4	0.44	17	-	-	B-C	-	80	1.44	02
140	10	0.18	10	1.8	0.32	17	-	-	B-C	-	78	1.44	03
93	15	0.18	13	1.4	0.25	19	-	-	B-C	-	73	1.44	04
70	20	0.18	17	1.1	0.20	19	-	-	B-C	-	70	1.09	05
47	30	0.12	15	1.4	0.17	21	-	-	B-C	-	62	1.44	06
35	40	0.12	19	1.1	0.13	20	-	-	B-C	-	57	1.09	07
23	61	0.09	19	1.1	0.10	20	-	-	B-C	-	50	0.72	08
17.5	80	0.09	16	1.0	0.06	16	-	-	B-C	-	48	0.56	09

\* The nominal power should be reduced if the ambient temperature is  $\geq 30^{\circ}\text{C}$ , or when a cooler gearbox is required.

\* Diminuire la potenza nominale in caso di temperatura ambiente  $\geq 30^{\circ}\text{C}$  o se è richiesta una bassa temperatura di utilizzo del riduttore.

Motor Flanges Available  
Flange Motore Disponibili

B) Supplied with Reduction Bushing  
Fornito con Bussola di Riduzione

B) Available on Request without reduction bushing  
Disponibile a Richiesta senza Bussola di Riduzione

C) Motor Flange Holes Position  
Posizione Fori Flangia Motore

**EN** Unit I30 is supplied with synthetic oil, providing "long life" lubrication.  
See table 1 for lubrication and recommended quantity.  
In table 2 please see possible radial loads and axial loads on the gearbox.

**I** Il riduttore tipo I30 viene fornito lubrificato a vita con olio sintetico.  
Vedi tab.1 per oli e quantità consigliati.  
In tab.2 sono presenti i carichi radiali e assiali applicabili al riduttore.

**D** Für die Lebensdauerschmierung ist das Getriebe der Größe I30 mit synthetischem Öl befüllt.  
In Tabelle 1 ist die Schmiermenge und das empfohlene Schmiermittel angegeben.  
In Tabelle 2 sind die zulässigen Radial- und Axialbelastungen des Getriebes aufgeführt.

**F** Le réducteur de type I30 est fourni lubrifié à vie avec de l'huile synthétique.  
Voir tableau 1 concernant les huiles et les quantités conseillées.  
Les charges radiales et axiales applicables au réducteur sont précisées dans le tableau 2.

**E** El reductor tamaño I30 se suministra, lubricado de por vida con aceite sintético.  
Ver tabla 1, para cantidades y aceites recomendados.  
En la tabla 2, se encuentran las cargas radiales y axiales admitidas por el reductor.

### ■ LUBRICATION I30 Oil Quantity 0.06 Lt.

AGIP Telium VSF 320

SHELL Omala S4 WE 320

For all details on lubrication and plugs check our website

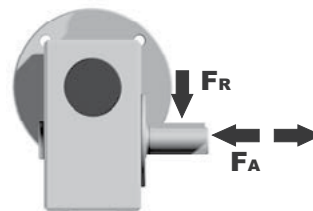
Per maggiori dettagli su lubrificazione e tappi olio vedi il nostro sito web

tab. 1

### ■ RADIAL AND AXIAL LOADS

#### Output shaft

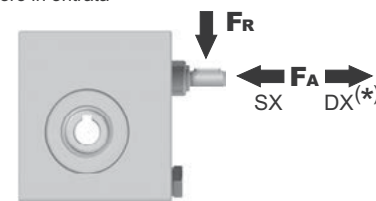
Albero di uscita



n <sub>2</sub> [min <sup>-1</sup> ]	FA [N]	FR [N]
200	120	600
150	140	700
100	160	800
75	180	900
50	200	1000
25	250	1250
15	280	1400

#### Input shaft

albero in entrata



n <sub>1</sub> [min <sup>-1</sup> ]	FA [N]	FR [N]
1400	20	100

\*Strong axial loads in the DX direction are not allowed.  
Non sono consentiti forti carichi assiali con direzione DX

tab. 2

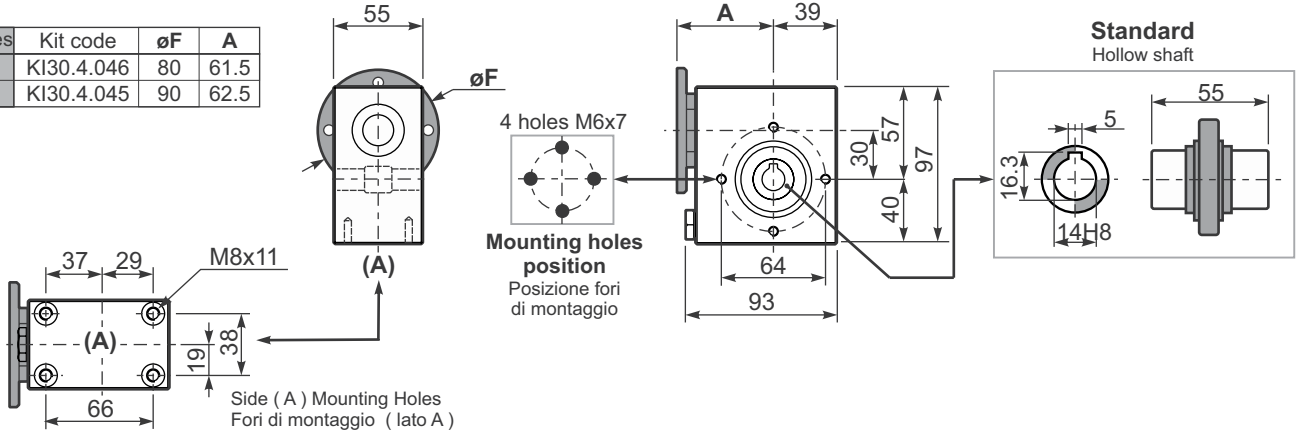
# I30 Stainless Steel - Gear 21Nm

3D dimensions on the Web

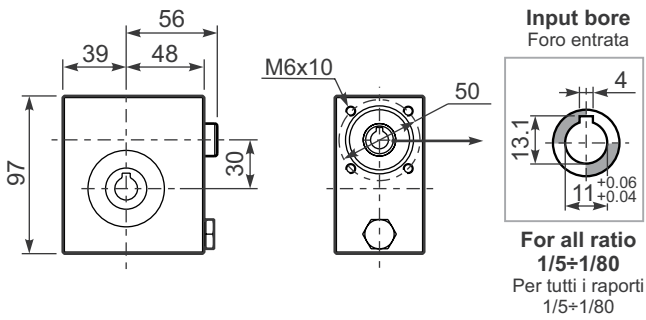
Gearbox weight  
peso riduttore **2.5 kg**

PI30UN... Basic wormbox  
Riduttore base

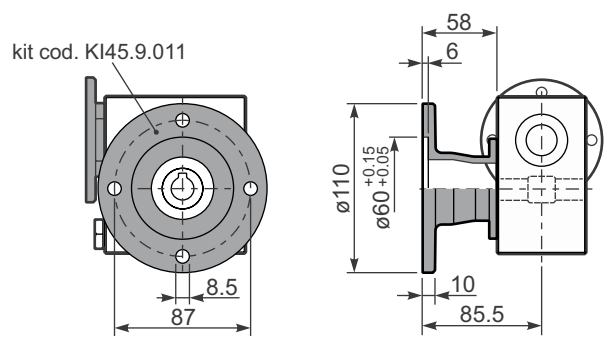
M. flanges	Kit code	øF	A
56B14	KI30.4.046	80	61.5
63B14	KI30.4.045	90	62.5



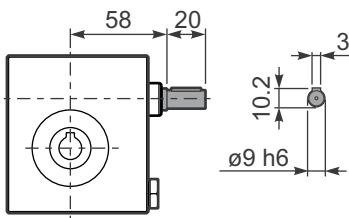
B130UN... Modular base  
Base modulare



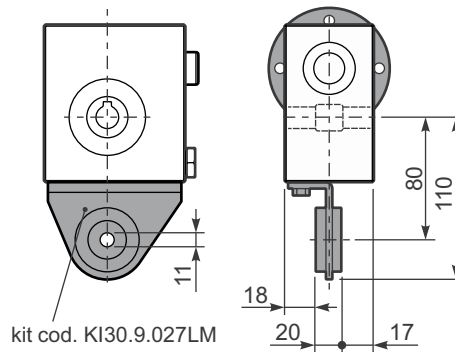
PI30FL... Output flange  
Flangia uscita



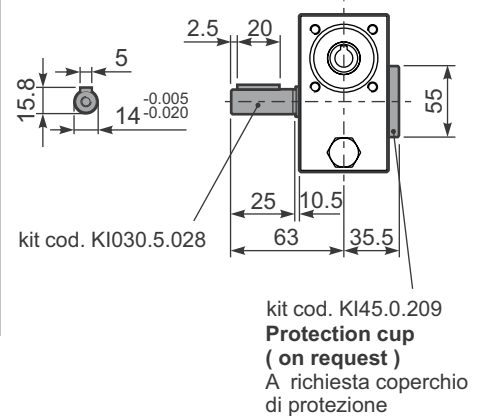
R130UN... Input shaft  
Albero in entrata



PI30BR... Reaction arm  
Braccio di reazione



PI30.....S... Single Shaft  
Albero lento semplice



# I45 Stainless Steel - Gear 41Nm

## Rating - Stainlesssteel WORM GEARBOXES



■ QUICK SELECTION / Selezione veloce							input speed ( $n_1$ ) = 1400 min <sup>-1</sup>						
Output Speed $n_2$ [min <sup>-1</sup> ]	Ratio $i$	Motor power $P_{1M}$ [kW]	Output torque $M_{2M}$ [Nm]	Service factor f.s.	Nominal power $P_{1R}$ [kW]	Nominal torque $M_{2R}$ [Nm]	B5 motor flanges not available		Available B14 motor flanges		Dynamic efficiency  RD	Tooth Module  [mm]	 Ratios code
							-	-	-P	-Q			
200	7	0.37	14	2.2	0.80	30	-	-	B-C		80	2.2	01
140	10	0.37	20	1.5	0.57	30	-	-	B-C		79	2.2	02
100	14	0.37	27	1.1	0.41	30	-	-	B-C		77	2.4	03
67	21	0.37	36	1.2	0.43	41	-	-	B-C		67	1.6	04
50	28	0.25	31	1.3	0.33	41	-	-	B-C		65	2.5	05
38	37	0.25	40	1.0	0.26	41	-	-	B-C		63	1.8	06
30	46	0.25	46	0.9	0.22	41	-	-	B-C		59	1.5	07
23	60	0.18	41	1.0	0.18	41	-	-	B-C		56	1.2	08
20	70	0.12	31	1.0	0.12	30	-	-	B-C		54	1.0	09
13.7	102	0.12	41	0.7	0.09	29	-	-	B-C		49	0.72	10

\* The nominal power should be reduced if the ambient temperature is  $\geq 30^\circ\text{C}$ , or when a cooler gearbox is required.

\* Diminuire la potenza nominale in caso di temperatura ambiente  $\geq 30^\circ\text{C}$  o se è richiesta una bassa temperatura di utilizzo del riduttore.

Motor Flanges Available Flange Motore Disponibili    
 B) Supplied with Reduction Bushing Fornito con Bussola di Riduzione    
 B) Available on Request without reduction bushing Disponibile a Richiesta senza Bussola di Riduzione    
 C) Motor Flange Holes Position Posizione Fori Flangia Motore

**EN** Unit I45 is supplied with synthetic oil, providing "long life" lubrication..  
See table 1 for lubrication and recommended quantity.  
In table 2 please see possible radial loads and axial loads on the gearbox.

**I** Il riduttore tipo I45 viene fornito lubrificato a vita con olio sintetico.  
Vedi tab.1 per oli e quantità consigliati.  
In tab.2 sono presenti i carichi radiali e assiali applicabili al riduttore.

**D** Für die Lebensdauerschmierung ist das Getriebe der Größe I45 mit synthetischem Öl befüllt.  
In Tabelle 1 ist die Schmiermenge und das empfohlene Schmiermittel angegeben.  
In Tabelle 2 sind die zulässigen Radial - und Axialbelastungen des Getriebes aufgeführt.

**F** Le réducteur de type I45 est fourni lubrifié à vie avec de l'huile synthétique.  
Voir tableau 1 concernant les huiles et les quantités conseillées.  
Les charges radiales et axiales applicables au réducteur sont précisées dans le tableau 2.

**E** El reductor tamaño I45 se suministra, lubricado de por vida con aceite sintético.  
Ver tabla 1, para cantidades y aceites recomendados.  
En la tabla 2, se encuentran las cargas radiales y axiales admitidas por el reductor.

Standard			On request		
B3	B6	B7	B8	V5	V6
0.15 LT	0.15 LT	0.20 LT	0.15 LT	0.15 LT	0.15 LT
AGIP Telium VSF 320			SHELL Omala S4 WE 320		

For all details on lubrication and plugs check our website **tab. 1**  
Per maggiori dettagli su lubrificazione e tappi olio vedi il nostro sito web

■ RADIAL AND AXIAL LOADS			
<b>Output shaft</b> Albero di uscita			
	$n_2$ [min <sup>-1</sup> ]	FA [N]	FR [N]
	200	180	900
	150	200	1000
	100	220	1100
	75	240	1200
	50	260	1400
	25	300	1800
15	400	2000	
<b>Input shaft</b> albero in entrata			
	$n_1$ [min <sup>-1</sup> ]	FA [N]	FR [N]
	1400	42	210
*Strong axial loads in the DX direction are not allowed. Non sono consentiti forti carichi assiali con direzione DX			

tab. 2

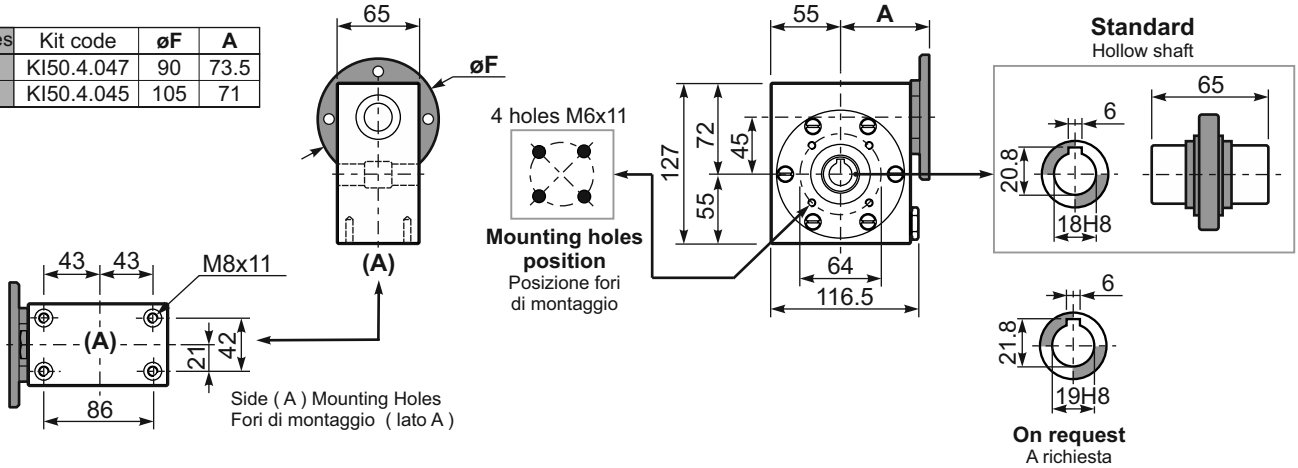
# I45 Stainless Steel - Gear 41Nm

3D dimensions on the Web

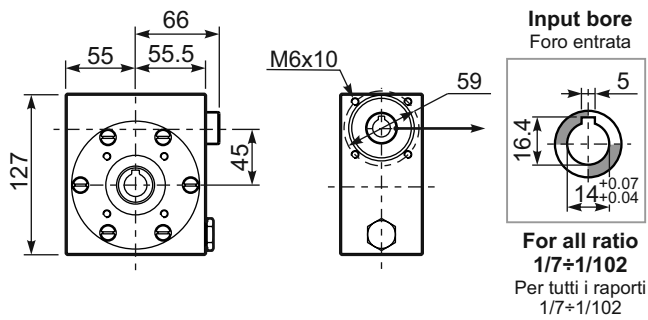
PI45**UN**... Basic wormbox  
Riduttore base

Gearbox weight  
peso riduttore **5.0 kg**

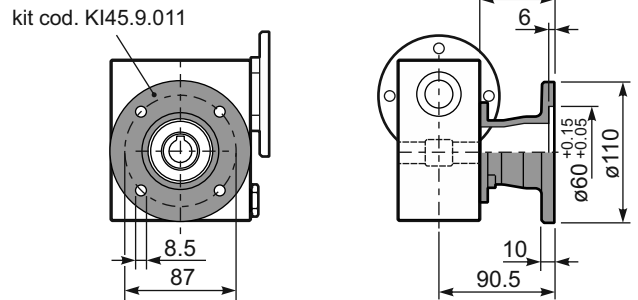
M. flanges	Kit code	øF	A
63B14	KI50.4.047	90	73.5
71B14	KI50.4.045	105	71



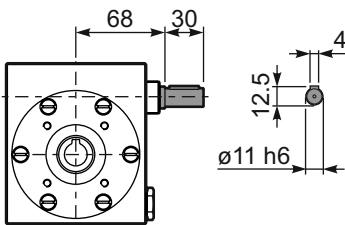
**B**I45UN... Modular base  
Base modulare



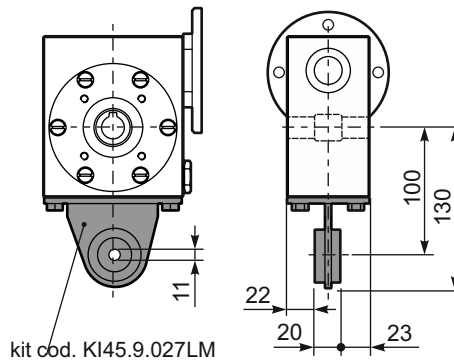
PI45**FL**... Output flange  
Flangia uscita



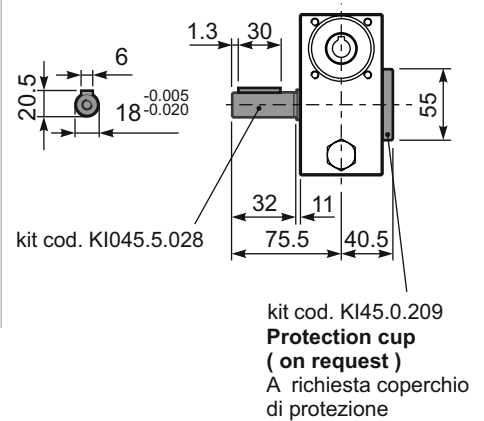
**R**I45UN... Input shaft  
Albero in entrata



PI45**BR**... Reaction arm  
Braccio di reazione



PI45.....**S**... Single Shaft  
Albero lento semplice



# 150 Stainless Steel - Gear 72Nm

## Rating - Stainlesssteel WORM GEARBOXES



■ QUICK SELECTION / Selezione veloce							input speed ( $n_1$ ) = 1400 min <sup>-1</sup>							
Output Speed $n_2$ [min <sup>-1</sup> ]	Ratio $i$	Motor power $P_{1M}$ [kW]	Output torque $M_{2M}$ [Nm]	Service factor f.s.	Nominal power $P_{1R}$ [kW]	Nominal torque $M_{2R}$ [Nm]	B5 motor flanges not available		Available B14 motor flanges			Dynamic efficiency RD	Tooth Module [mm]	Ratios code
							-	-	-P	-Q	-R			
200	7	0.75	29	1.9	1.5	57	-	-	63	71	80	82	2.5	01
140	10	0.75	41	1.5	1.1	62	-	-	B-C	B		80	2.4	02
100	14	0.75	57	1.2	0.90	68	-	-	B-C	B		79	2.6	03
78	18	0.55	51	1.2	0.67	62	-	-	B-C	B		75	2.0	04
54	26	0.55	67	1.0	0.54	66	-	-	B-C	B		69	2.7	05
47	30	0.55	79	0.9	0.50	72	-	-	B-C	B		70	2.5	12
39	36	0.37	63	1.2	0.43	72	-	-	B-C			69	2.1	06
33	43	0.37	72	1.0	0.35	68	-	-	B-C			66	1.8	07
23	60	0.25	59	1.0	0.26	62	-	-	B-C			58	1.3	08
21	68	0.25	66	0.9	0.22	58	-	-	B-C			57	1.2	09
17.5	80	0.18	53	1.1	0.19	57	-	-	B-C			54	1.0	10
14	100	0.12	41	1.3	0.15	51	-	-	B-C			50	0.8	11

\* The nominal power should be reduced if the ambient temperature is  $\geq 30^\circ\text{C}$ , or when a cooler gearbox is required.

\* Diminuire la potenza nominale in caso di temperatura ambiente  $\geq 30^\circ\text{C}$  o se è richiesta una bassa temperatura di utilizzo del riduttore.

■ Motor Flanges Available  
Flange Motore Disponibili

⊗ B) Supplied with Reduction Bushing  
Fornito con Bussola di Riduzione

⊗ B) Available on Request without reduction bushing  
Disponibile a Richiesta senza Bussola di Riduzione



C) Motor Flange Holes Position  
Posizione Fori Flangia Motore

**EN** Unit **I50** is supplied with synthetic oil, providing "long life" lubrication.  
See table 1 for lubrication and recommended quantity.  
In table 2 please see possible radial loads and axial loads on the gearbox.

**I** Il riduttore tipo **I50** viene fornito lubrificato a vita con olio sintetico.  
Vedi tab.1 per oli e quantità consigliati.  
In tab.2 sono presenti i carichi radiali e assiali applicabili al riduttore.

**D** Für die Lebensdauerschmierung ist das Getriebe der Größe **I50** mit synthetischem Öl befüllt.  
In Tabelle 1 ist die Schmiermenge und das empfohlene Schmiermittel angegeben.  
In Tabelle 2 sind die zulässigen Radial - und Axialbelastungen des Getriebes aufgeführt.

**F** Le réducteur de type **I50** est fourni lubrifié à vie avec de l'huile synthétique.  
Voir tableau 1 concernant les huiles et les quantités conseillées.  
Les charges radiales et axiales applicables au réducteur sont précisées dans le tableau 2.

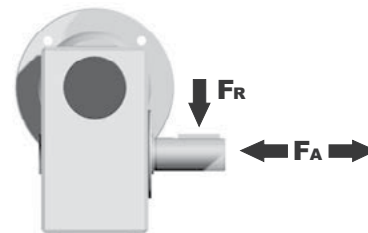
**E** El reductor tamaño **I50** se suministra, lubricado de por vida con aceite sintético.  
Ver tabla 1, para cantidades y aceites recomendados.  
En la tabla 2, se encuentran las cargas radiales y axiales admitidas por el reductor.

Standard			On request		
B3	B6	B7	B8	V5	V6
0.22 LT	0.22 LT	0.28 LT	0.22 LT	0.22 LT	0.22 LT
AGIP Telium VSF 320			SHELL Omala S4 WE 320		

For all details on lubrication and plugs check our website **tab. 1**  
Per maggiori dettagli su lubrificazione e tappi olio vedi il nostro sito web

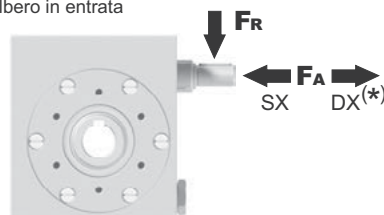
### ■ RADIAL AND AXIAL LOADS

**Output shaft**  
Albero di uscita



$n_2$ [min <sup>-1</sup> ]	FA [N]	FR [N]
200	240	1200
150	280	1400
100	300	1500
75	340	1700
50	380	1900
25	480	2500
15	560	2800

**Input shaft**  
albero in entrata



$n_1$ [min <sup>-1</sup> ]	FA [N]	FR [N]
1400	76	380

\*Strong axial loads in the DX direction are not allowed.  
Non sono consentiti forti carichi assiali con direzione DX

tab. 2

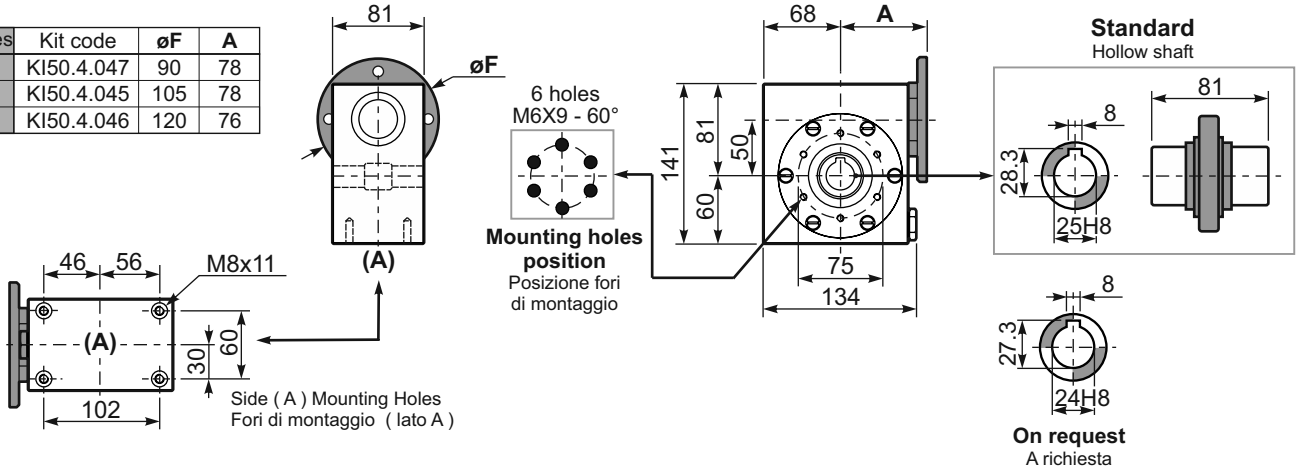
# 150 Stainless Steel - Gear 72Nm

3D dimensions on the Web

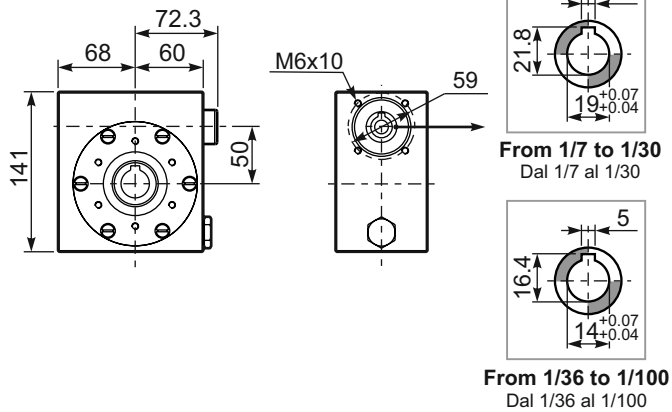
PI50UN... Basic wormbox  
Riduttore base

Gearbox weight  
peso riduttore **7.3 kg**

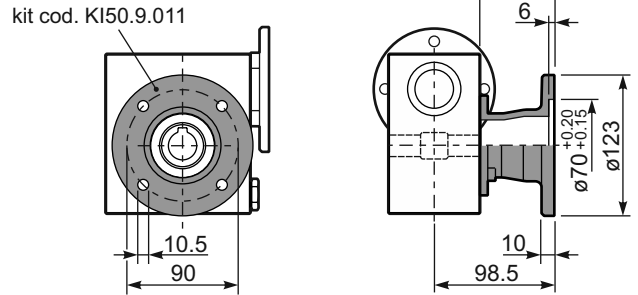
M. flanges	Kit code	øF	A
63B14	KI50.4.047	90	78
71B14	KI50.4.045	105	78
80B14	KI50.4.046	120	



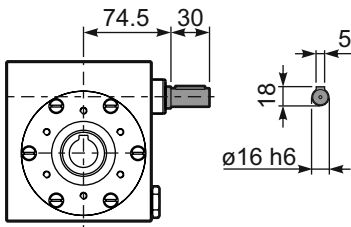
B150UN... Modular base  
Base modulare



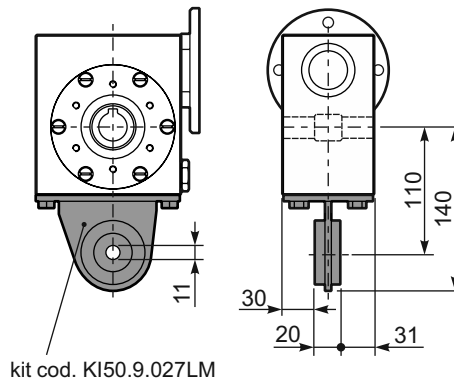
PI50FL... Output flange  
Flangia uscita



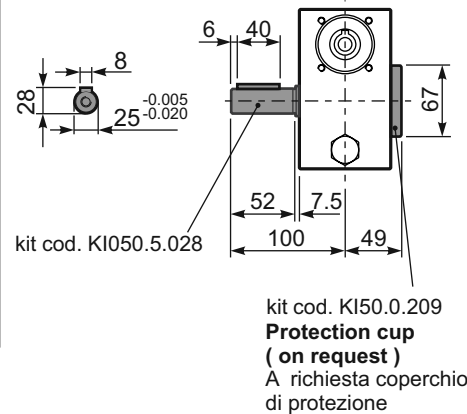
R150UN... Input shaft  
Albero in entrata



PI50BR... Reaction arm  
Braccio di reazione



PI50...S... Single Shaft  
Albero lento semplice



# I63 Stainless Steel - Gear 147Nm

## Rating - Stainlesssteel WORM GEARBOXES



■ QUICK SELECTION / Selezione veloce										input speed (n <sub>1</sub> ) = 1400 min <sup>-1</sup>				
Output Speed n <sub>2</sub> [min <sup>-1</sup> ]	Ratio i	Motor power P <sub>1M</sub> [kW]	Output torque M <sub>2M</sub> [Nm]	Service factor f.s.	Nominal power P <sub>1R</sub> [kW]	Nominal torque M <sub>2R</sub> [Nm]	B5 motor flanges not available		Available B14 motor flanges			Dynamic efficiency RD	Tooth Module [mm]	Ratios code
							-	-	-Q	-R	-T			
200	7	1.8	71	1.8	3.2	125	-	-	71	80	90	83	3.1	01
140	10	1.8	99	1.4	2.4	134	-	-	B-C	B-C		81	3.1	02
93	15	1.5	121	1.1	1.7	138	-	-	B-C	B-C		79	3.1	03
74	19	1.1	111	1.2	1.4	138	-	-	B-C	B-C		78	2.6	04
58	24	1.1	135	1.0	1.2	142	-	-	B-C	B-C		75	2.0	05
47	30	1.1	167	0.9	0.96	146	-	-	B-C	B-C		74	3.2	06
39	36	0.75	125	1.2	0.88	147	-	-	B-C	B-C		68	2.7	07
31	45	0.55	111	1.2	0.67	135	-	-	B-C	C		66	2.1	08
23	60	0.55	140	0.9	0.51	130	-	-	B-C	C		62	1.6	12
21	67	0.55	151	0.8	0.45	124	-	-	B-C	C		60	1.5	09
17.5	80	0.37	115	1.0	0.38	119	-	-	B-C	C		57	1.3	10
14.9	94	0.37	123	1.0	0.36	119	-	-	B-C	C		52	1.1	11

\* The nominal power should be reduced if the ambient temperature is ≥ 30°C, or when a cooler gearbox is required.

\* Diminuire la potenza nominale in caso di temperatura ambiente ≥ 30°C o se è richiesta una bassa temperatura di utilizzo del riduttore.

■ Motor Flanges Available  
Flange Motore Disponibili

⊗ B) Supplied with Reduction Bushing  
Fornito con Bussola di Riduzione

⊗ B) Available on Request without reduction bushing  
Disponibile a Richiesta senza Bussola di Riduzione

⊗ C) Motor Flange Holes Position  
Posizione Fori Flangia Motore

**EN** Unit I63 is supplied with synthetic oil, providing "long life" lubrication.  
See table 1 for lubrication and recommended quantity.  
In table 2 please see possible radial loads and axial loads on the gearbox.

**I** Il riduttore tipo I63 viene fornito lubrificato a vita con olio sintetico.  
Vedi tab.1 per oli e quantità consigliati.  
In tab.2 sono presenti i carichi radiali e assiali applicabili al riduttore.

**D** Für die Lebensdauerschmierung ist das Getriebe der Größe I63 mit synthetischem Öl befüllt.  
In Tabelle 1 ist die Schmiermenge und das empfohlene Schmiermittel angegeben.  
In Tabelle 2 sind die zulässigen Radial - und Axialbelastungen des Getriebes aufgeführt.

**F** Le réducteur de type I63 est fourni lubrifié à vie avec de l'huile synthétique.  
Voir tableau 1 concernant les huiles et les quantités conseillées.  
Les charges radiales et axiales applicables au réducteur sont précisées dans le tableau 2.

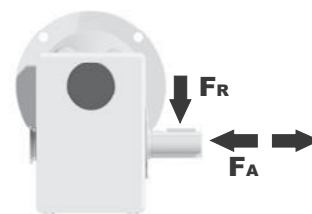
**E** El reductor tamaño I63 se suministra, lubricado de por vida con aceite sintético.  
Ver tabla 1, para cantidades y aceites recomendados.  
En la tabla 2, se encuentran las cargas radiales y axiales admitidas por el reductor.

Standard	On request				
0.60 LT	0.60 LT	0.82 LT	0.60 LT	0.60 LT	0.60 LT
AGIP Telium VSF 320			SHELL Omala S4 WE 320		

For all details on lubrication and plugs check our website **tab. 1**  
Per maggiori dettagli su lubrificazione e tappi olio vedi il nostro sito web

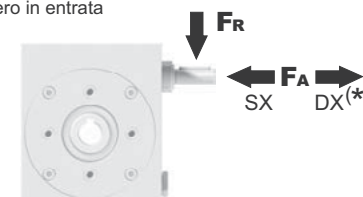
### ■ RADIAL AND AXIAL LOADS

**Output shaft**  
Albero di uscita



n <sub>2</sub>	FA	FR
200	360	1800
150	400	2000
100	460	2300
75	500	2500
50	600	3000
25	700	3800
15	800	4000

**Input shaft**  
albero in entrata



n <sub>1</sub> [min <sup>-1</sup> ]	FA [N]	FR [N]
1400	90	450

\*Strong axial loads in the DX direction are not allowed.  
Non sono consentiti forti carichi assiali con direzione DX

tab. 2



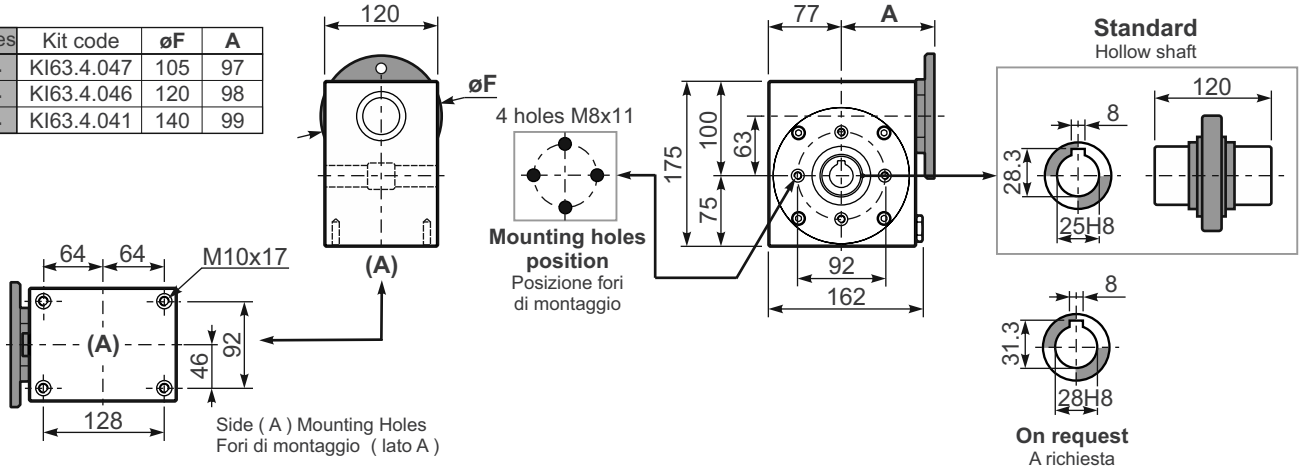
# I63 Stainless Steel - Gear 147Nm

3D dimensions on the Web

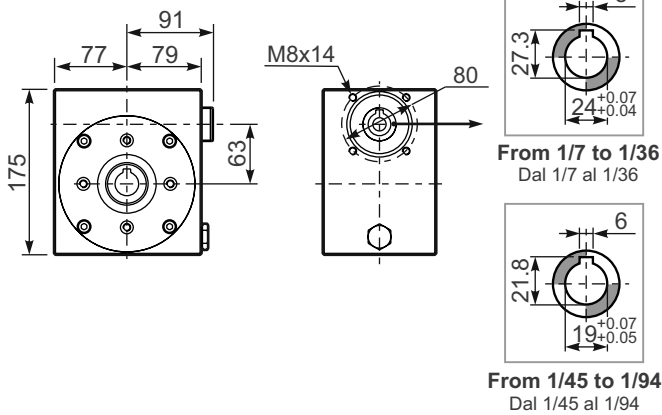
Gearbox weight  
peso riduttore **14.6 kg**

PI63**UN**... Basic wormbox  
Riduttore base

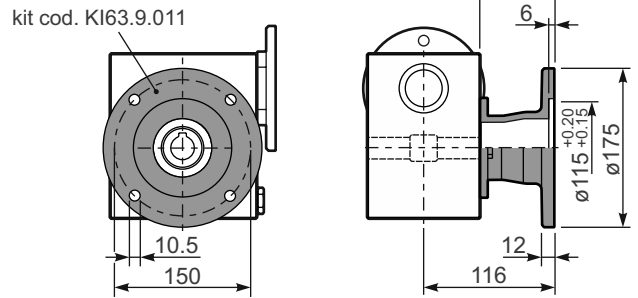
M. flanges	Kit code	øF	A
71B14	KI63.4.047	105	97
80B14	KI63.4.046	120	98
90B14	KI63.4.041	140	99



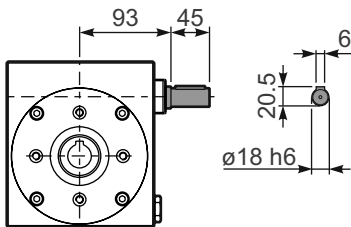
B163UN... Modular base  
Base modulare



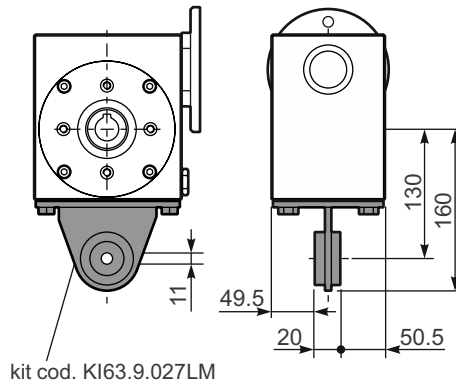
PI63FL... Output flange  
Flangia uscita



R163UN... Input shaft  
Albero in entrata

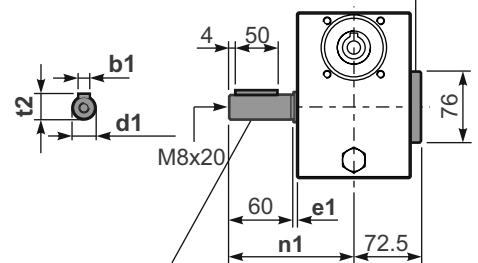


PI63BR... Reaction arm  
Braccio di reazione



PI63...S... Single Shaft  
Albero lento semplice

kit cod. KI63.0.209  
**Protection cup (on request)**  
A richiesta coperchio di protezione



kit cod. KI063.5.028  
kit.cod. KI070.5.028 On request

	b1	e1	d1	n1	t2
Standard	8	3.2	25 <sup>-0.005/-0.020</sup>	121.9	28
On request	8	3.5	28 <sup>-0.005/-0.020</sup>	122.2	31

# 185 Stainless Steel - Gear 347Nm

## Rating - Stainlesssteel WORM GEARBOXES



■ QUICK SELECTION / Selezione veloce							input speed ( $n_1$ ) = 1400 min <sup>-1</sup>					
Output Speed $n_2$ [min <sup>-1</sup> ]	Ratio $i$	Motor power $P_{1M}$ [kW]	Output torque $M_{2M}$ [Nm]	Service factor f.s.	Nominal power $P_{1R}$ [kW]	Nominal torque $M_{2R}$ [Nm]	Available B5 motor flanges		Available B14 motor flanges	Dynamic efficiency  RD	Tooth Module  [mm]	Ratios code 
							-D	-E	-U			
							80	90	100-112			
200	7	4.0	168	1.5	6.1	257	B	B		88	4.23	01
140	10	4.0	218	1.3	5.2	284	B	B		80	4.2	02
100	14	3.0	223	1.4	4.1	305	B	B		78	4.5	03
70	20	2.2	237	1.2	2.7	294	B	B		79	3.4	04
64	22	2.2	258	1.1	2.5	294	B	B		78	3.1	05
50	28	2.2	315	1.1	2.4	347	B	B		75	4.7	06
37	38	1.5	276	1.2	1.8	336	B	B		71	3.5	07
30	46	1.5	320	1.0	1.5	326	B	B		68	3.1	08
27	52	1.1	258	1.1	1.2	289	B	B		66	2.7	09
21	67	1.1	327	0.9	0.97	289	B	B		65	2.1	10
18.9	74	0.75	220	1.2	0.91	268	B	B		58	1.9	11
14.6	96	0.55	191	1.3	0.70	242	B	B		53	1.5	12

\* The nominal power should be reduced if the ambient temperature is  $\geq 30^\circ\text{C}$ , or when a cooler gearbox is required.

\* Diminuire la potenza nominale in caso di temperatura ambiente  $\geq 30^\circ\text{C}$  o se è richiesta una bassa temperatura di utilizzo del riduttore.

Motor Flanges Available Flange Motore Disponibili  
 B) Supplied with Reduction Bushing Fornito con Bussola di Riduzione  
 B) Available on Request without reduction bushing Disponibile a Richiesta senza Bussola di Riduzione  
 C) Motor Flange Holes Position Posizione Fori Flangia Motore

**EN** Unit I85 is supplied with synthetic oil, providing "long life" lubrication. See table 1 for lubrication and recommended quantity. In table 2 please see possible radial loads and axial loads on the gearbox.

**I** Il riduttore tipo I85 viene fornito lubrificato a vita con olio sintetico. Vedi tab.1 per oli e quantità consigliati. In tab.2 sono presenti i carichi radiali e assiali applicabili al riduttore.

**D** Für die Lebensdauerschmierung ist das Getriebe der Größe I85 mit synthetischem Öl befüllt. In Tabelle 1 ist die Schmiermenge und das empfohlene Schmiermittel angegeben. In Tabelle 2 sind die zulässigen Radial - und Axialbelastungen des Getriebes aufgeführt.

**F** Le réducteur de type I85 est fourni lubrifié à vie avec de l'huile synthétique. Voir tableau 1 concernant les huiles et les quantités conseillées. Les charges radiales et axiales applicables au réducteur sont précisées dans le tableau 2.

**E** El reductor tamaño I85 se suministra, lubricado de por vida con aceite sintético. Ver tabla 1, para cantidades y aceites recomendados. En la tabla 2, se encuentran las cargas radiales y axiales admitidas por el reductor.

Standard			On request		
B3	B6	B7	B8	V5	V6
1.40 LT	1.40 LT	1.70LT	1.40 LT	1.40 LT	1.40 LT
AGIP Telium VSF 320			SHELL Omala S4 WE 320		

For all details on lubrication and plugs check our website **tab. 1**  
Per maggiori dettagli su lubrificazione e tappi olio vedi il nostro sito web

■ RADIAL AND AXIAL LOADS				
<b>Output shaft</b> Albero di uscita		$n_2$ [min <sup>-1</sup> ]	FA [N]	FR [N]
		200	500	2500
		150	580	2900
		100	600	3000
		75	700	3500
		50	800	4000
		25	1000	5000
		15	1160	5800
<b>Input shaft</b> albero in entrata		$n_1$ [min <sup>-1</sup> ]	FA [N]	FR [N]
		1400	160	809

\*Strong axial loads in the DX direction are not allowed.  
Non sono consentiti forti carichi assiali con direzione DX

tab. 2

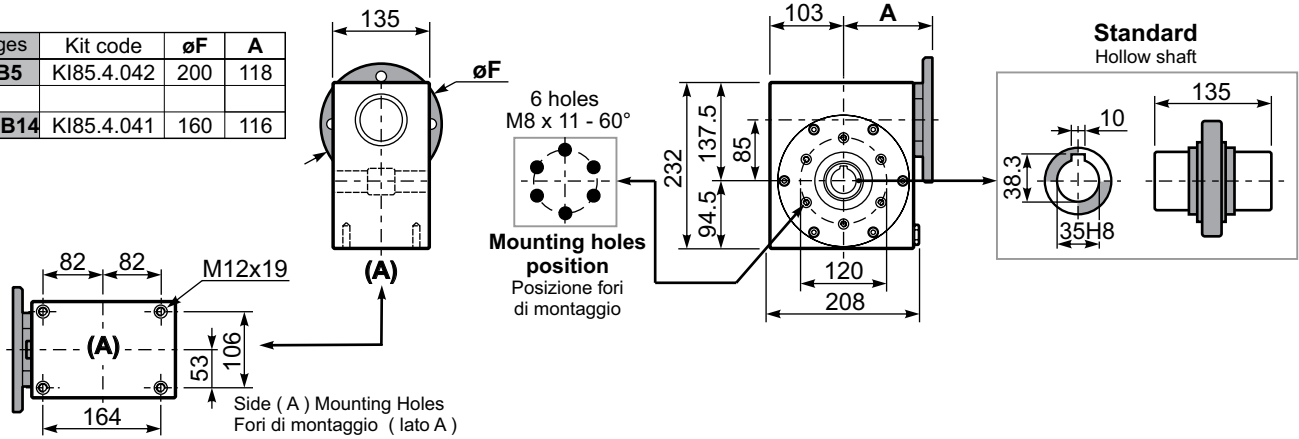
# 185 Stainless Steel - Gear 347Nm

3D dimensions on the Web

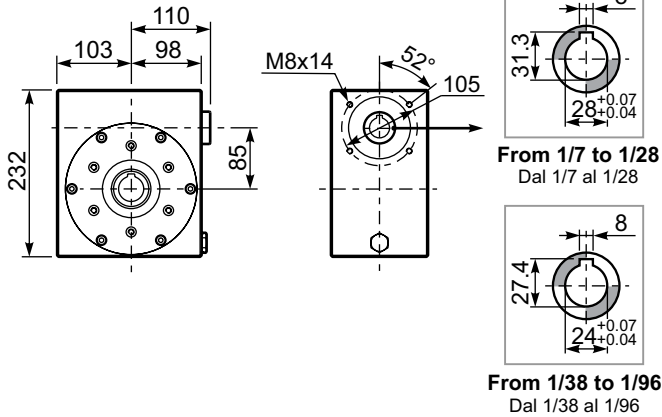
**Gearbox weight**  
peso riduttore **23.3 kg**

**PI85UN...** Basic wormbox  
Riduttore base

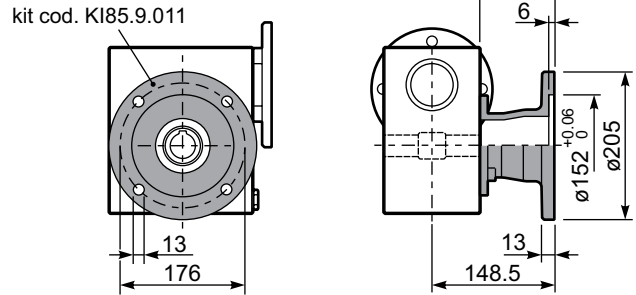
M. flanges	Kit code	øF	A
<b>80-90B5</b>	KI85.4.042	200	118
<b>100-112B14</b>	KI85.4.041	160	116



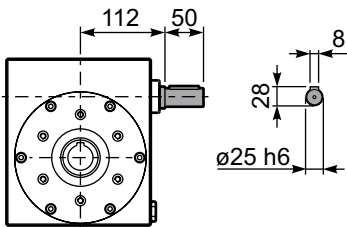
**BI85UN...** Modular base  
Base modulare



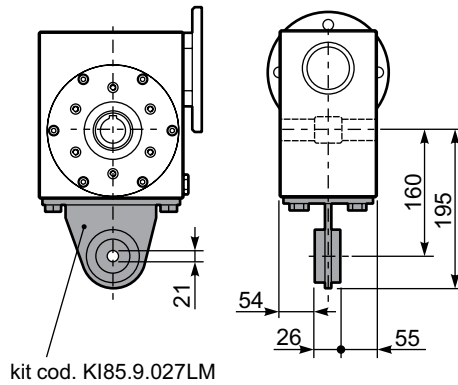
**PI85FL...** Output flange  
Flangia uscita



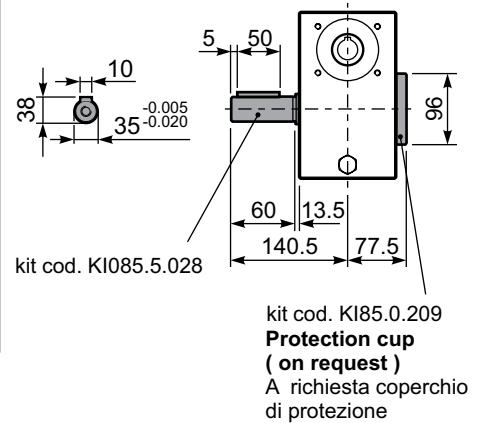
**RI85UN...** Input shaft  
Albero in entrata



**PI85BR...** Reaction arm  
Braccio di reazione



**PI85.....S...** Single Shaft  
Albero lento semplice



# I11 Stainless Steel - Gear 651Nm



## Rating - Stainlesssteel WORM GEARBOXES

■ QUICK SELECTION / Selezione veloce							input speed ( $n_1$ ) = 1400 min <sup>-1</sup>					
Output Speed $n_2$ [min <sup>-1</sup> ]	Ratio $i$	Motor power $P_{1M}$ [kW]	Output torque $M_{2M}$ [Nm]	Service factor f.s.	Nominal power $P_{1R}$ [kW]	Nominal torque $M_{2R}$ [Nm]	Available B5 motor flanges		Available B14 motor flanges	Dynamic efficiency  RD	Tooth Module  [mm]	 Ratios code
							-D	-E	-U			
200	7	4.0	168	2.9	11.5	483	B	B		88	5.5	01
140	10	4.0	235	2.2	9.0	525	B	B		86	5.4	02
88	16	4.0	358	1.5	6.0	536	B	B		82	5.3	03
70	20	4.0	447	1.2	4.9	546	B	B		82	4.5	04
61	23	3.0	377	1.4	4.1	515	B	B		80	3.9	05
47	30	3.0	467	1.4	4.2	651	B	B		76	5.6	06
37	38	3.0	583	1.1	3.3	641	B	B		75	4.7	07
31	45	2.2	493	1.2	2.7	599	B	B		73	4.0	08
26	53	2.2	557	1.1	2.5	620	B	B		70	3.5	09
22	64	1.5	452	1.2	1.8	536	B	B		69	2.9	10
16.7	84	1.1	410	1.2	1.3	494	B	B		65	2.2	11
14.1	99	1.1	446	1.1	1.2	483	B	B		60	1.9	12

\* The nominal power should be reduced if the ambient temperature is  $\geq 30^\circ\text{C}$ , or when a cooler gearbox is required.

\* Diminuire la potenza nominale in caso di temperatura ambiente  $\geq 30^\circ\text{C}$  o se è richiesta una bassa temperatura di utilizzo del riduttore.

■ Motor Flanges Available  
Flange Motore Disponibili

⊗ B) Supplied with Reduction Bushing  
Fornito con Bussola di Riduzione

⊗ B) Available on Request without reduction bushing  
Disponibile a Richiesta senza Bussola di Riduzione

⊗ C) Motor Flange Holes Position  
Posizione Fori Flangia Motore

**EN** Unit I11 is supplied with synthetic oil, providing "long life" lubrication. For mounting position V5-V6 please contact us. See table 1 for lubrication and recommended quantity. In table 2 please see possible radial loads and axial loads on the gearbox.

**I** Il riduttore tipo I11 viene fornito lubrificato a vita con olio sintetico. Per posizioni V5-V6 contattare il ns. servizio tecnico. Vedi tab.1 per oli e quantità consigliati. In tab.2 sono presenti i carichi radiali e assiali applicabili al riduttore.

**D** Für die Lebensdauerschmierung ist das Getriebe der Größe I11 mit synthetischem Öl befüllt. Bei Einbaulage V5 oder V6 bitten wir um Rücksprache. In Tabelle 1 ist die Schmiermenge und das empfohlene Schmiermittel angegeben. In Tabelle 2 sind die zulässigen Radial - und Axialbelastungen des Getriebes aufgeführt.

**F** Le réducteur de type I11 est fourni lubrifié à vie avec de l'huile synthétique. Concernant les positions V5.V6, contactez notre service d'assistance technique. Voir tableau 1 concernant les huiles et les quantités conseillées. Les charges radiales et axiales applicables au réducteur sont précisées dans le tableau 2.

**E** El reductor tamaño I11 se suministra, lubricado de por vida con aceite sintético. Para las posiciones V5 y V6 contactar con nuestro servicio técnico. Ver tabla 1, para cantidades y aceites recomendados. En la tabla 2, se encuentran las cargas radiales y axiales admitidas por el reductor.

Standard			On request		
B3	B6	B7	B8	V5	V6
3.50 LT	2.50 LT	2.50 LT	2.10 LT	1.60 LT	1.60 LT
AGIP Telium VSF 320			SHELL Omala S4 WE 320		

For all details on lubrication and plugs check our website **tab. 1**  
Per maggiori dettagli su lubrificazione e tappi olio vedi il nostro sito web

■ RADIAL AND AXIAL LOADS			
<b>Output shaft</b> Albero di uscita			
	$n_2$ [min <sup>-1</sup> ]	FA [N]	FR [N]
	200	600	2900
	150	700	3300
	100	750	3600
	75	800	4000
	50	920	4600
	25	1200	6000
15	1400	7000	
<b>Input shaft</b> albero in entrata			
	$n_1$ [min <sup>-1</sup> ]	FA [N]	FR [N]
	1400	228	1140

\*Strong axial loads in the DX direction are not allowed.  
Non sono consentiti forti carichi assiali con direzione DX

tab. 2

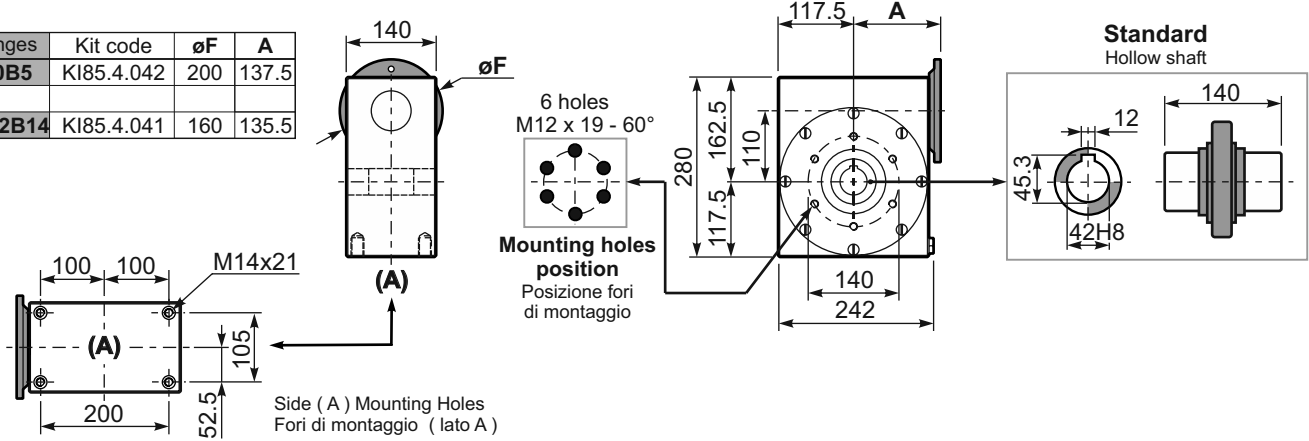
# I11 Stainless Steel - Gear 651Nm

3D dimensions on the Web

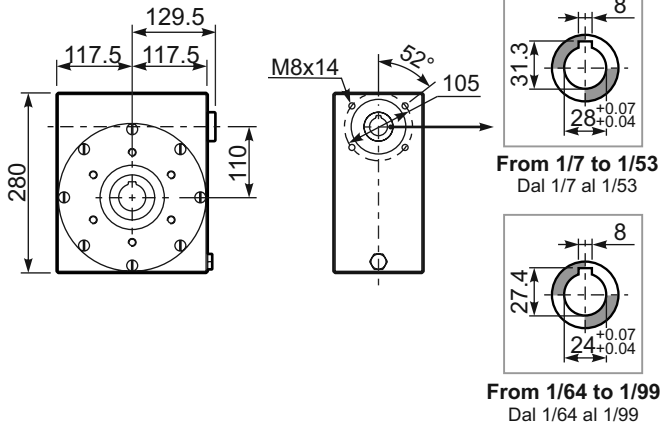
**Gearbox weight**  
peso riduttore **38.5 kg**

**PI11UN...** Basic wormbox  
Riduttore base

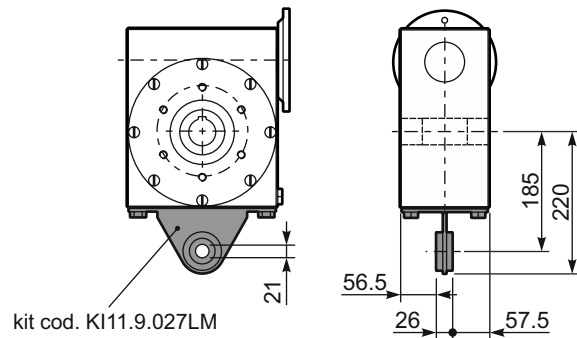
M. flanges	Kit code	øF	A
<b>80-90B5</b>	KI85.4.042	200	137.5
<b>100-112B14</b>	KI85.4.041	160	135.5



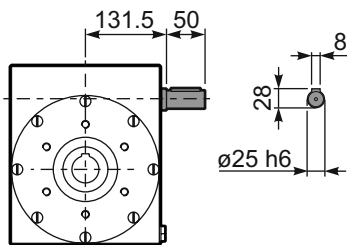
**B111UN...** Modular base  
Base modulare



**PI11BR...** Reaction arm  
Braccio di reazione



**R111UN...** Input shaft  
Albero in entrata



# 411I One Step - 38Nm

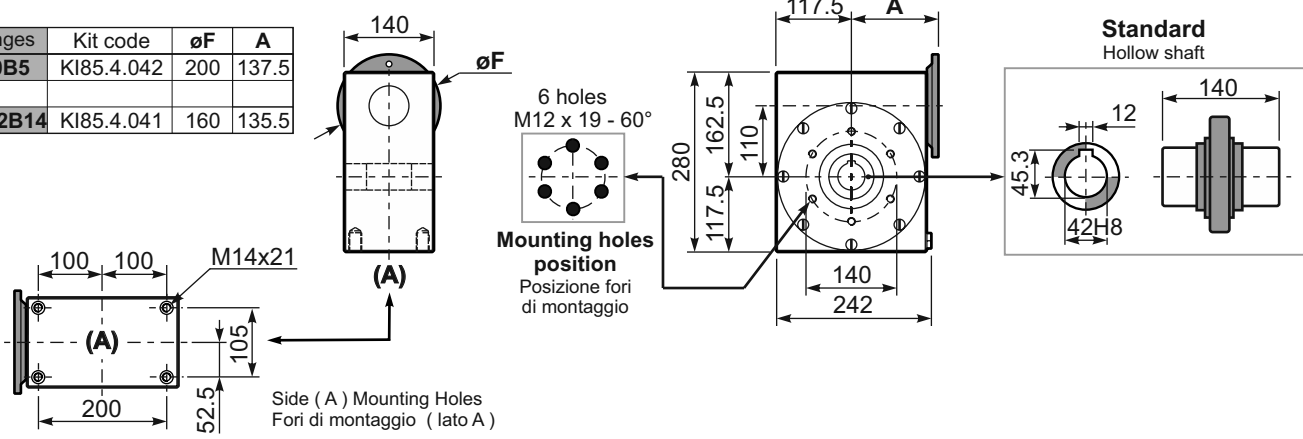
## Rating - Stainlesssteel ONE STEP GEARBOXES



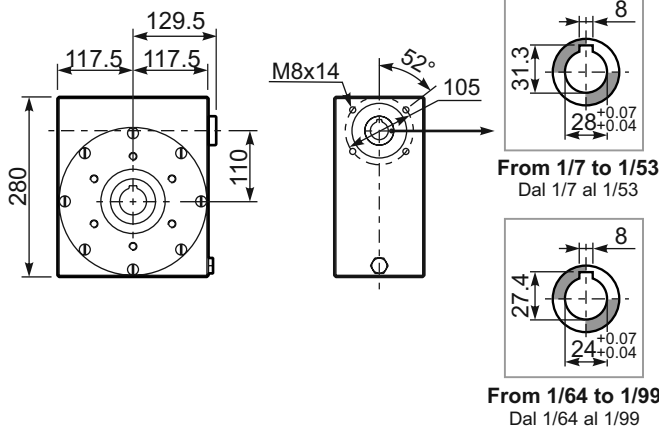
**Gearbox weight**  
peso riduttore **38.5 kg**

**PI11UN...** Basic wormbox  
Riduttore base

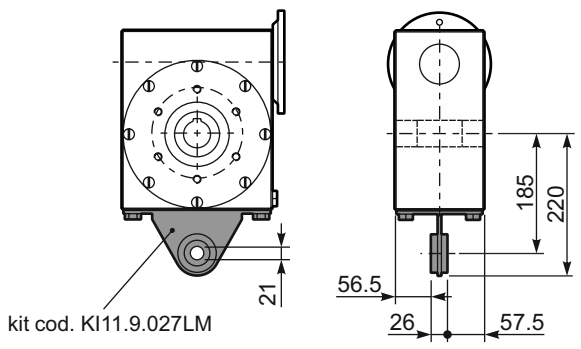
M. flanges	Kit code	øF	A
<b>80-90B5</b>	KI85.4.042	200	137.5
<b>100-112B14</b>	KI85.4.041	160	135.5



**B111UN...** Modular base  
Base modulare



**PI11BR...** Reaction arm  
Braccio di reazione



**R111UN...** Input shaft  
Albero in entrata

